



# Joint Investment Board Presentation

**Presenting**

**Andy Grozelle**

**Chief Administrative Officer**

**Town of Aylmer**

**[agrozelle@town.aylmer.on.ca](mailto:agrozelle@town.aylmer.on.ca)**

**Heather Sachs, CPA**

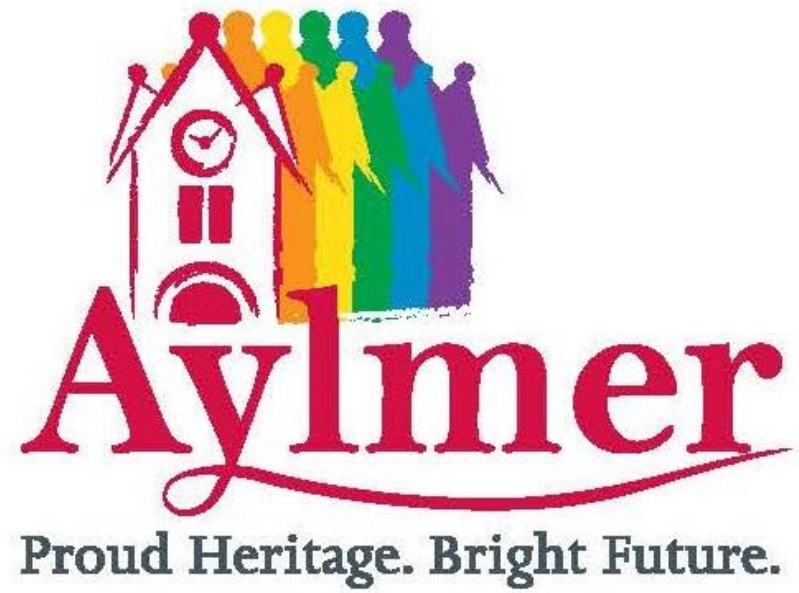
**Director of Financial Services**

**Town of Aylmer**

**[hsachs@town.aylmer.on.ca](mailto:hsachs@town.aylmer.on.ca)**



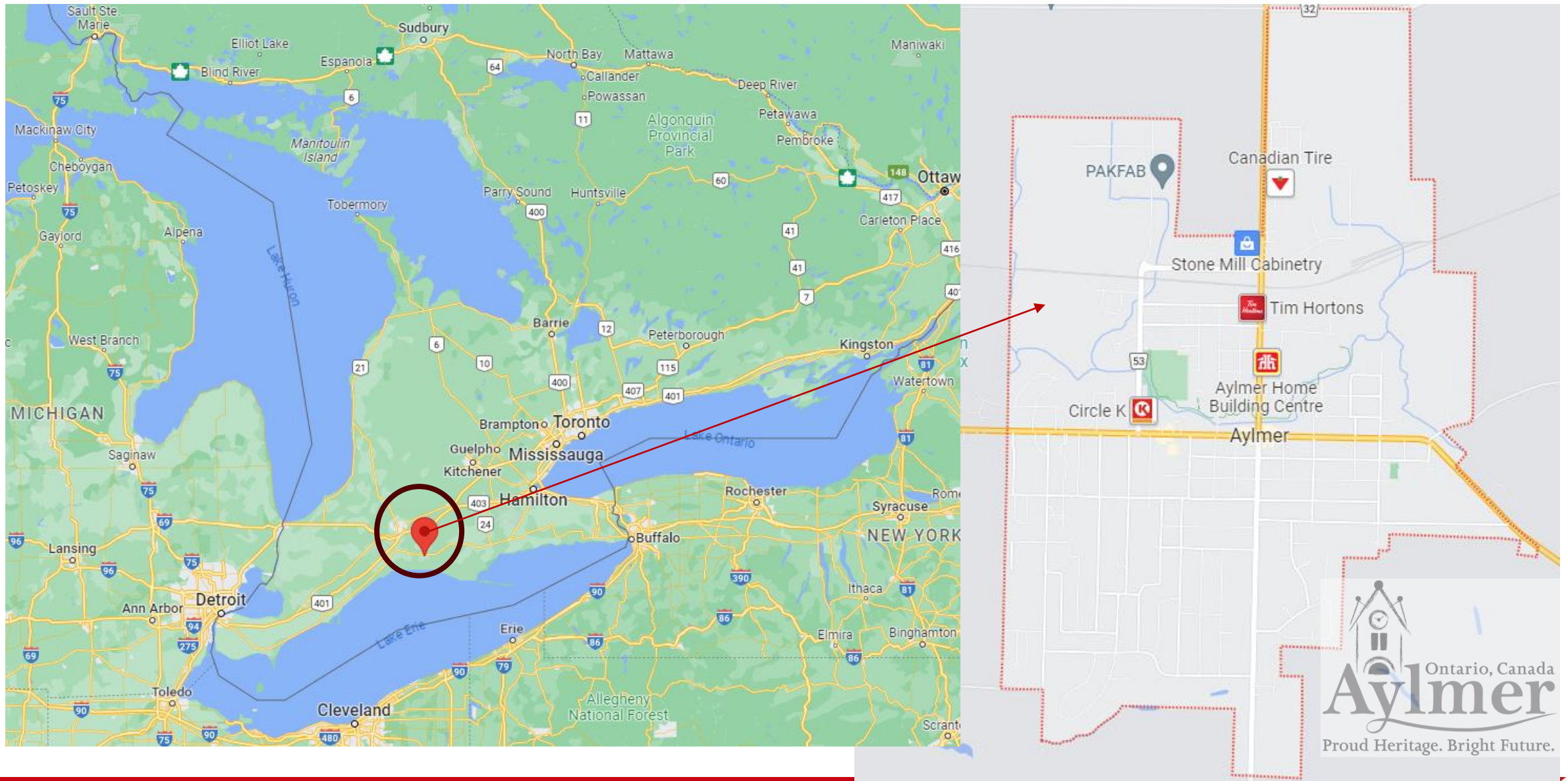
**Proud Heritage. Bright Future.**





## Quick Facts

- Aylmer is a small urban community of approximately 8,500 people
- Strategically located on Highway 3, and within easy distance to Highway 401
- Home to a broad range of manufacturing firms
- Vibrant downtown, farmer's market, and a variety of fairs and events that are held throughout the year
- Aylmer has established itself as a progressive employer through establishing a compressed work week and flexible work arrangements
- Aylmer Council has a progressive vision for the community including accelerated housing and industrial growth
- The Town of Aylmer supports diversity and inclusion in the community.
- Aylmer is a service area and meeting place for the rural communities surrounding the Town.



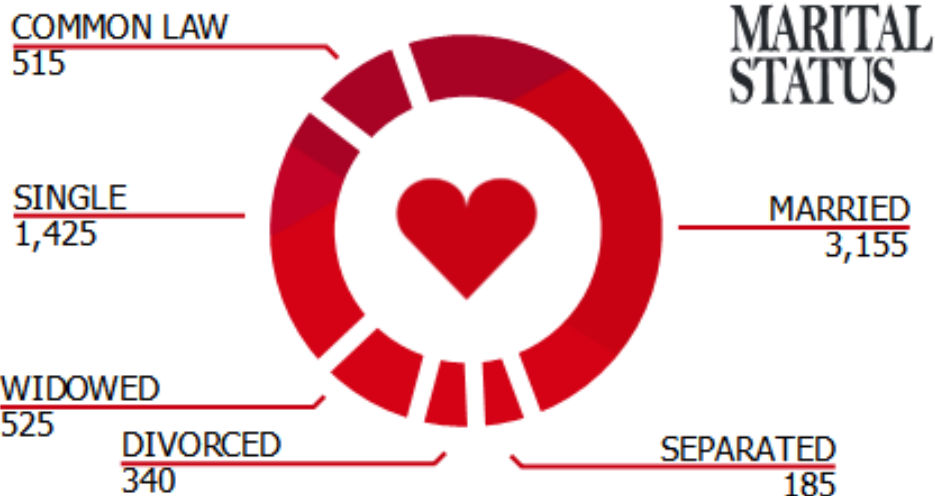
Proud Heritage. Bright Future.


## EDUCATION

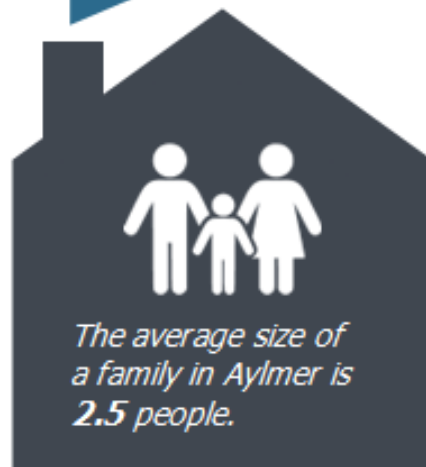
Of Aylmer's resident population, **1,885** people have secondary school diplomas, **1,545** have college or other certificates and **560** have university degrees. The field of study most pursued is **Engineering & Related Technologies**, followed by **Business Management & Public Administration**.



## HOME OWNERSHIP

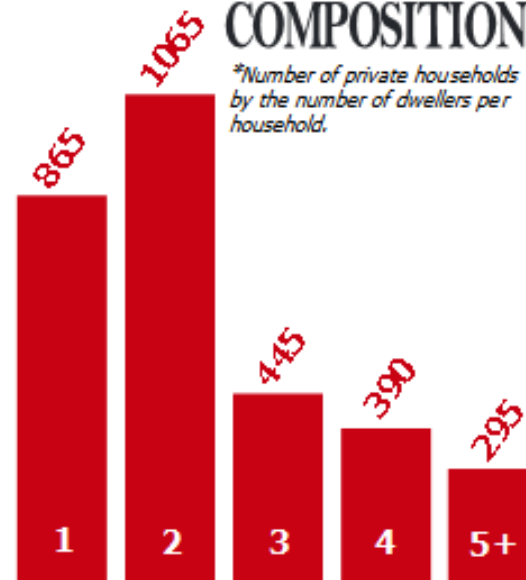


 Median Household Income: **\$56,806**



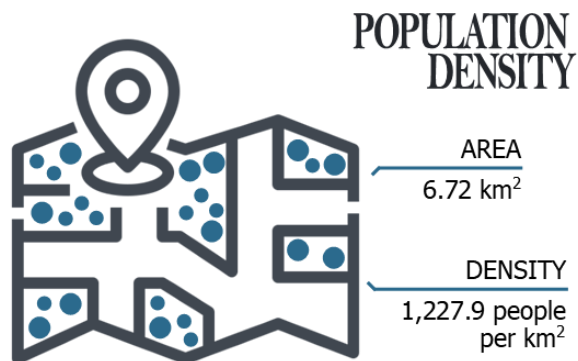
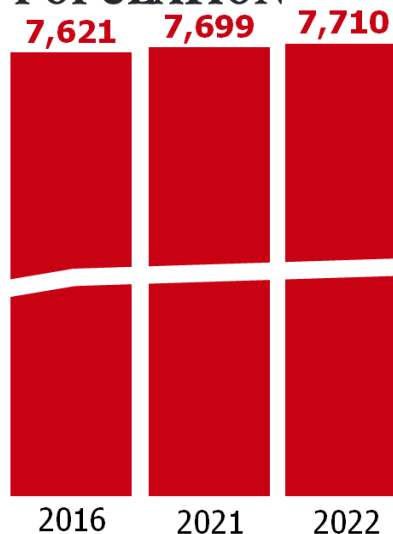
## HOUSEHOLD COMPOSITION

*\*Number of private households by the number of dwellers per household.*





## POPULATION

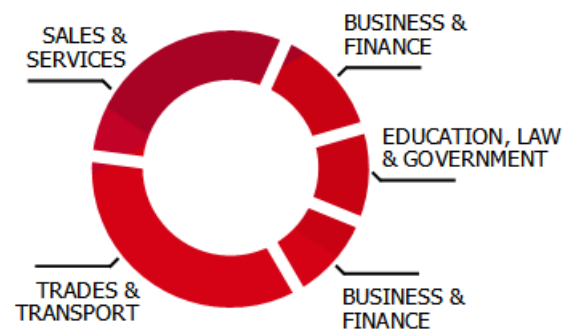


## LABOUR FORCE



The Town of Aylmer has an unemployment rate of **9.1%**.

## TOP 5 OCCUPATION SECTORS



## COMMUTE TO WORK



## TOP 10 EMPLOYMENT SECTORS



The average home to work commute for residents in Aylmer is **19 Minutes** with the majority of workers commuting to work by **vehicle**.





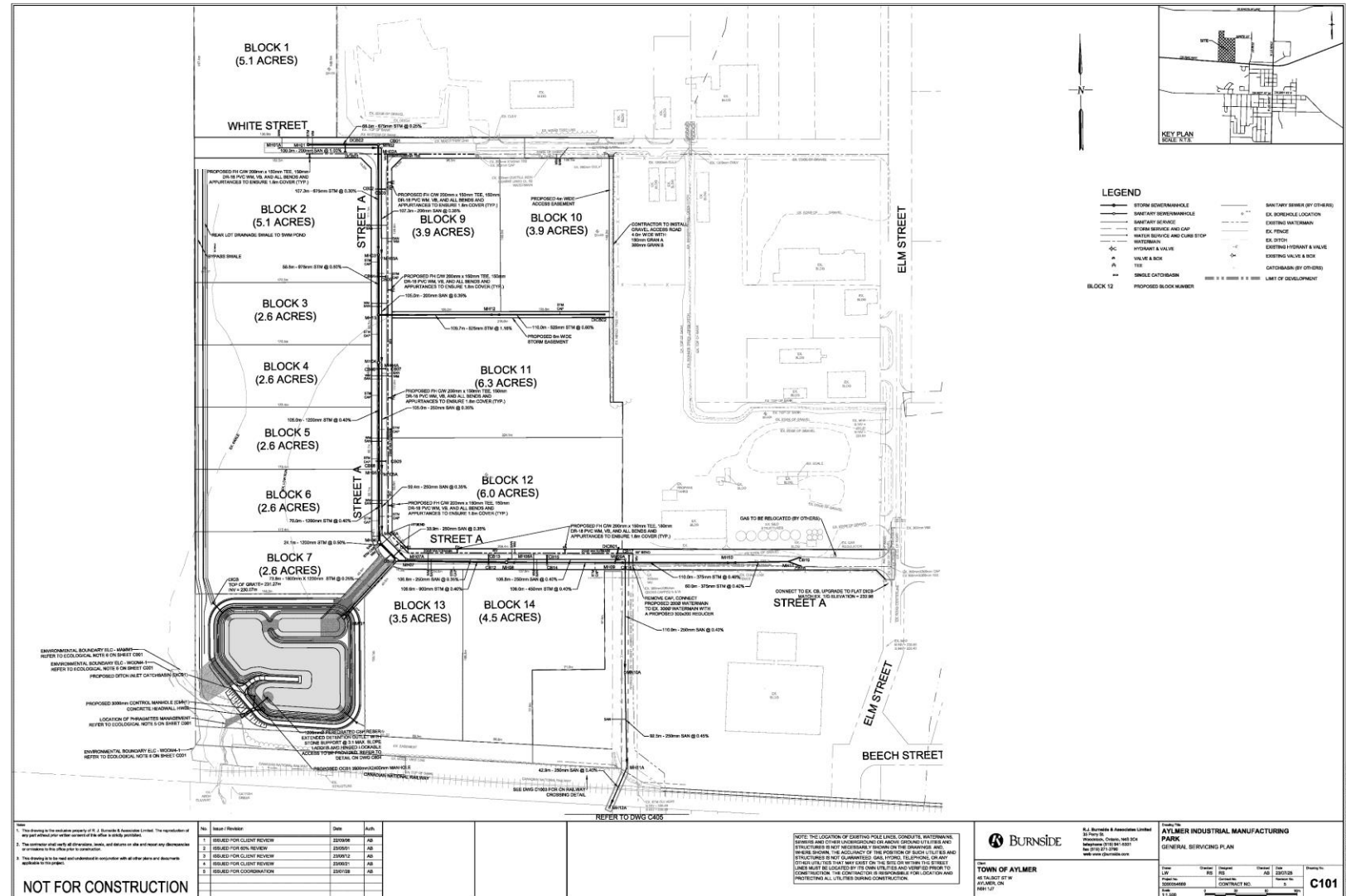
# Growth in Aylmer

## Willowrun Subdivision – Phase One

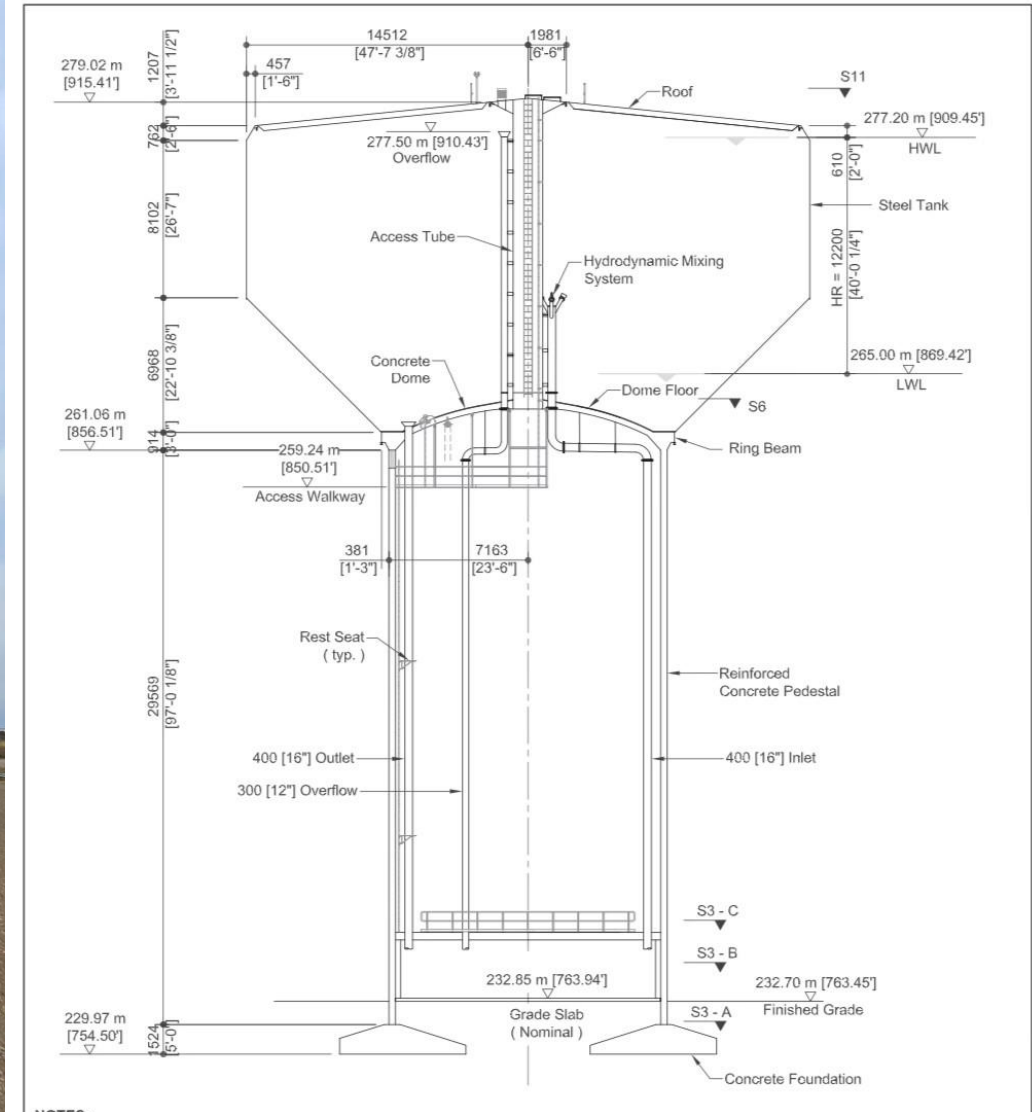
October 2023





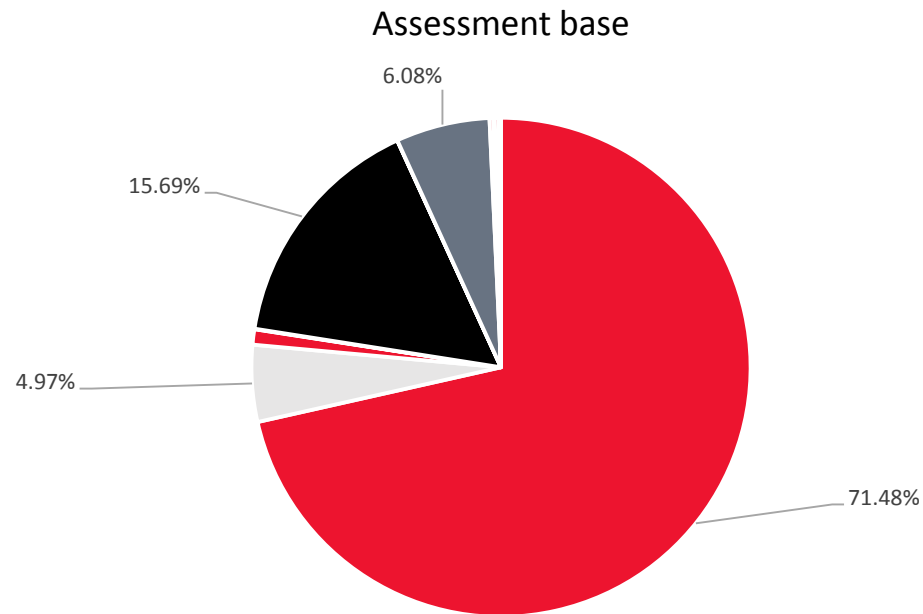


# Aylmer Water Tower

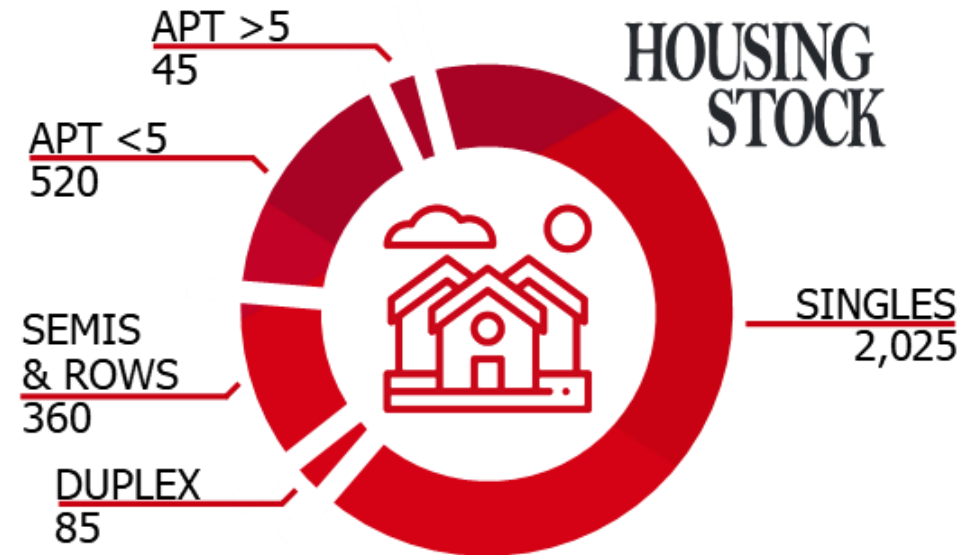




# Assessment & Population

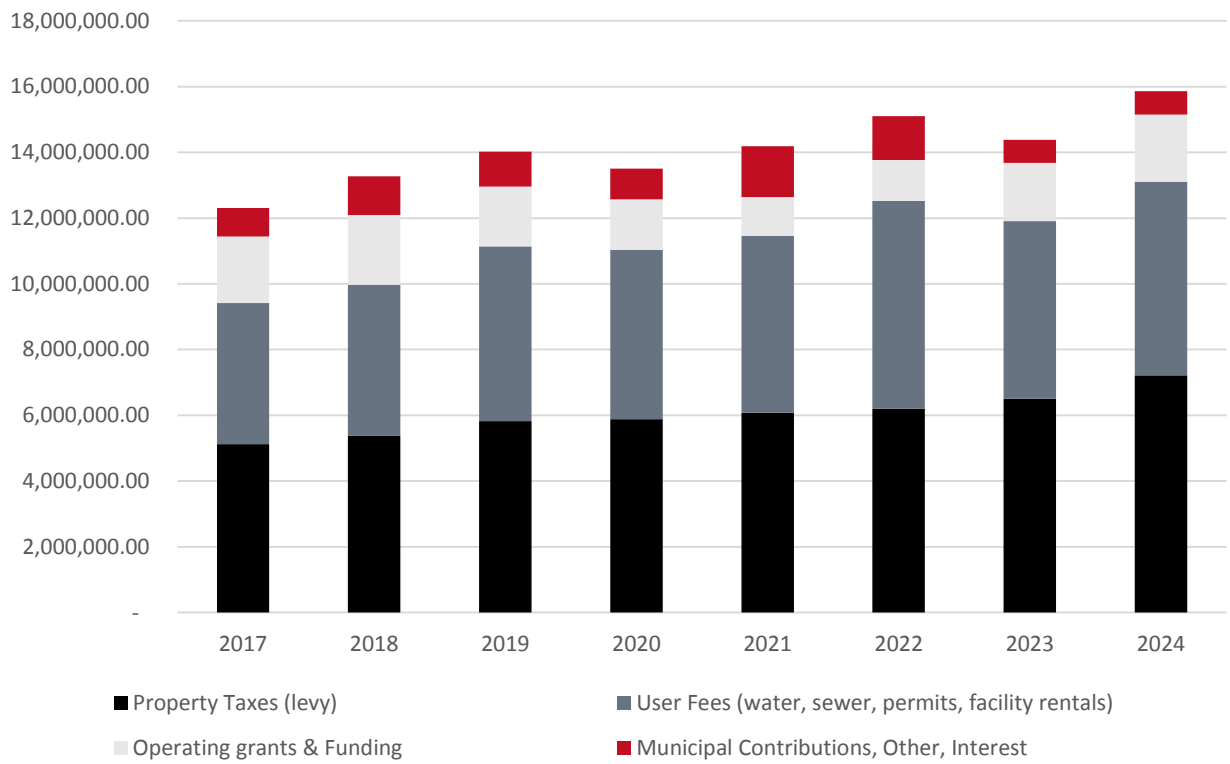


- res/farm (RT)
- farmlands (FT)
- industrial (IT)
- commercial excess/vacant unit (CU)
- industrial excess/vacant unit (IU)
- multi-res (MT)
- commercial (CT)
- pipeline (PT)
- commercial vacant land (CX)
- industrial vacant land (IX)
- new multi-residential (NT)
- parking lot (GT)
- res/farm farmland class I (R1)
- shopping centre (ST)

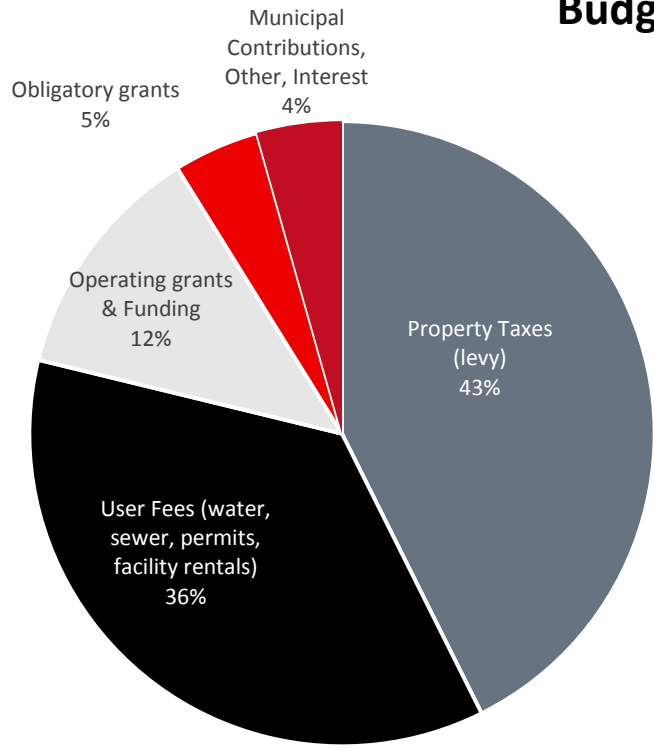


# Funding Sources

Sources of Revenue

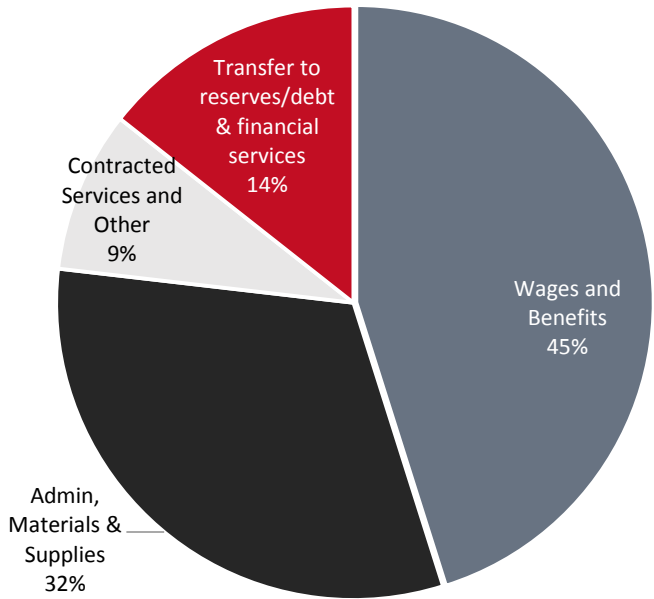


Budget 2024

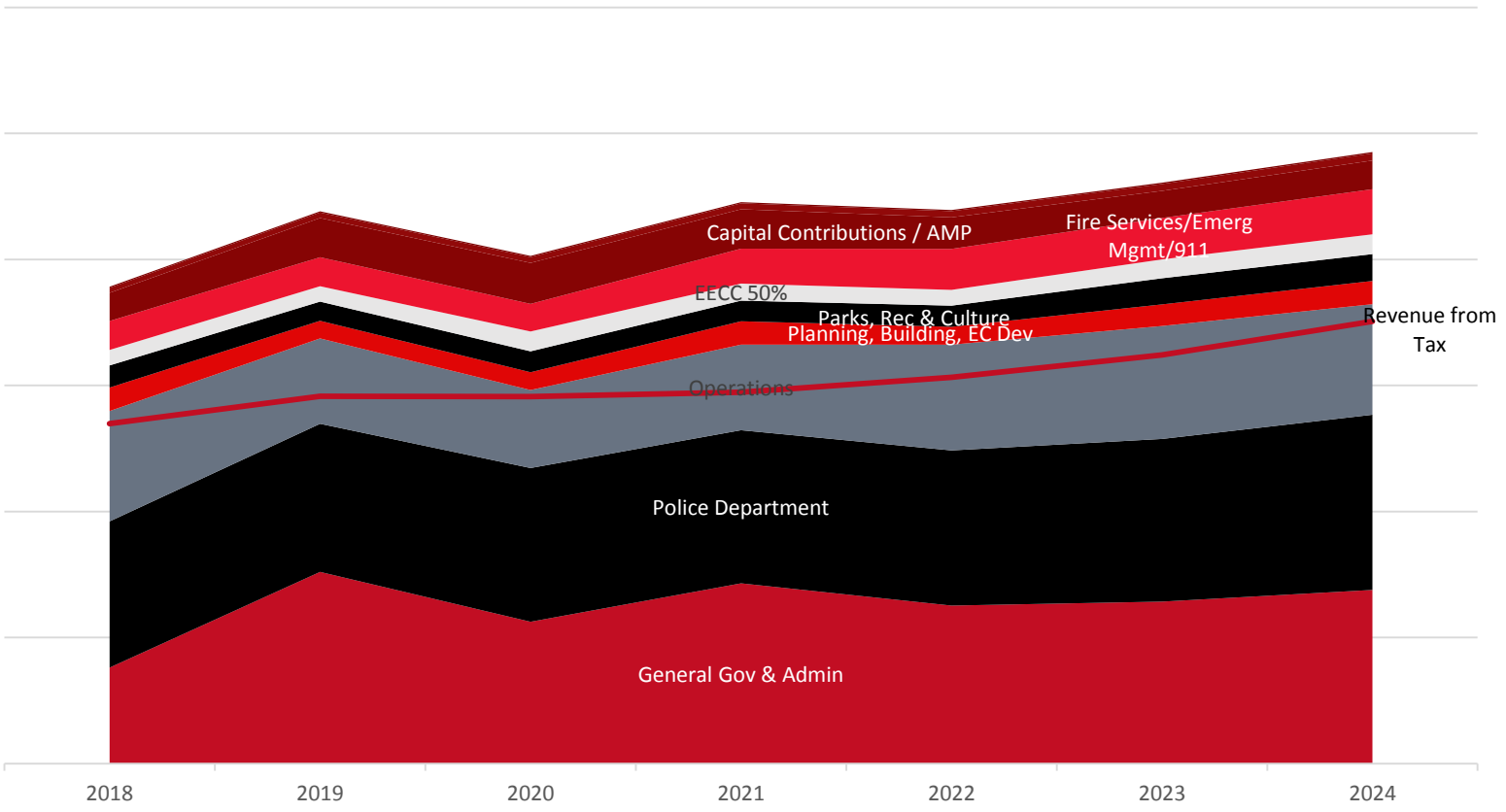




# Operating Costs



## Departmental Operating Costs





[Link to EC Dev Video](#)

<https://youtu.be/yfEzyW5XZ-o>

<https://aylmer.ca/>

<https://www.facebook.com/TownofAylmer/>

<https://www.instagram.com/townofaylmer/>

Proud Heritage. Bright Future.

